



NATTARO SCOUT – AN ACTIVE DETECTION TRAP TO CAPTURE BED BUGS



Nattaro Scout, for detection of low-level bed bug infestations, is a Swedish invention with patented lure and protected innovative design. The lure mimics the natural scent of a bed bug harborage and attracts both nymphs and adults. Use the traps to verify an infestation, for long term monitoring and quality assurance following a treatment.

All stages of the bed bugs feed on our blood and they want to be close to the food. Hence 9 out of 10 bed bug infestations starts in our beds. Following a quick visual inspection place 2 traps per bed at the darkest corners. Close to the bed leg or between mattresses. Check the outside and inside of the traps regularly and replace the lure every 4 weeks.

Contact a professional pest control professional if you detect bed bugs. Nattaro Scout is a valuable tool for an Integrated Pest Management approach to control bed bugs.

COMPARATIVE TEST OF THREE ACTIVE TRAPS

Hit rate, probability of captures of 1≥ bed bugs/week traps with lure (N=20)



- Nattaro Scout had a hit rate of 90-100% over a 3 week period.
- None of the other two traps had more than 35% hit rate over a 3 week period.
- The tests were repeated 20 times for each product during this time period
- All the compared traps are active traps, i.e. with a lure to attract the bed bugs



THE TRAP AND LURE

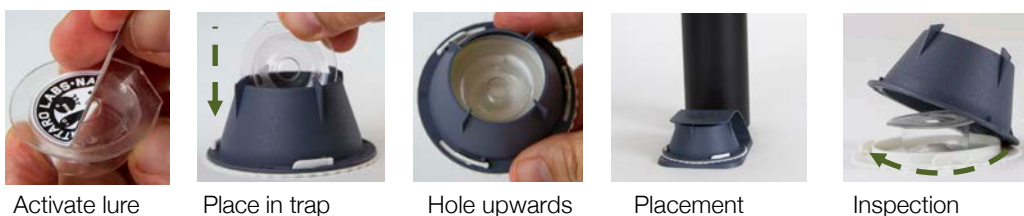
The lure is in a protective bag with a sticker, open the bag and remove the sticker. Place the lure inside the trap. The hole must face upwards. The lure smells like home for the bed bugs, since it mimics the scent of an aggregation. It attracts both the adult bed bugs and the nymph stages. The structure of the material and the colour makes the trap inviting to the bed bugs. They are able to climb in but not out again. Inspect regularly, both outside and inside. Change to fresh lure every 4 weeks.

Areas of use:

- For early detection of low level infestations
- For quality assurance following a treatment
- For monitoring in environments with a high risk of infestation

PLACEMENT

9 out of 10 bed bug infestations starts in our beds. This is where the traps should be placed. We recommend 2 traps per bed, in the darkest corners. On the floor by the bed legs close to the head of the bed or between the mattresses in the corners. madrasserna eller intill sängbenen i hörnen på sängen.



Activate lure

Place in trap

Hole upwards

Placement

Inspection

DURABILITY

Following activation the lure will attract bed bugs for 21-25 days, in normal room temperature. Following this period the efficacy will go down. At higher temperatures the efficacy of the lure will go down faster. Replace the lure every 4 weeks.

STORAGE

Long term storage of the lure is in a refrigerator, to ensure the efficacy. However shorter periods of storage in room temperature does not harm the lure. The protective sticker on the lure prevents any leakage. Do not freeze the lure, it will destroy it. Durability is a year from production, make sure to always check the best before date before usage.

DISPOSAL AND WARNING

In order to prevent any live bed bugs to escape from the traps during inspection, place the used traps in sealed plastic bags. The traps, which are made by biodegradable material, after freezing can be used again with fresh lure. The trap with the components and the lure, including sticker and bag are sorted as combustible residual waste.

The lure contains synthetic pheromones that in direct contact can cause allergic reactions. Read the safety data sheet for further information on these.

Keep away from children and pets.